



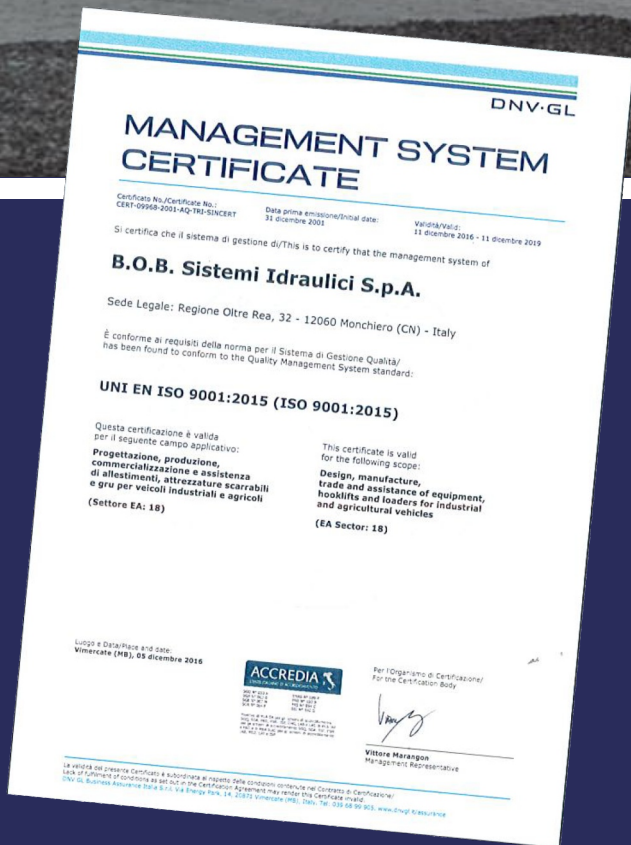
ITR Articulated



ITRunner



For 45 years we have been producing equipment for the transport of materials developing a global know-how able to make us one of the reference companies at international level



B.O.B. Sistemi Idraulici S.p.A. was the first Italian company in the sector to be ISO 9001 certified, still maintained by an internal quality management system under strict procedures certified by DNV-GL.



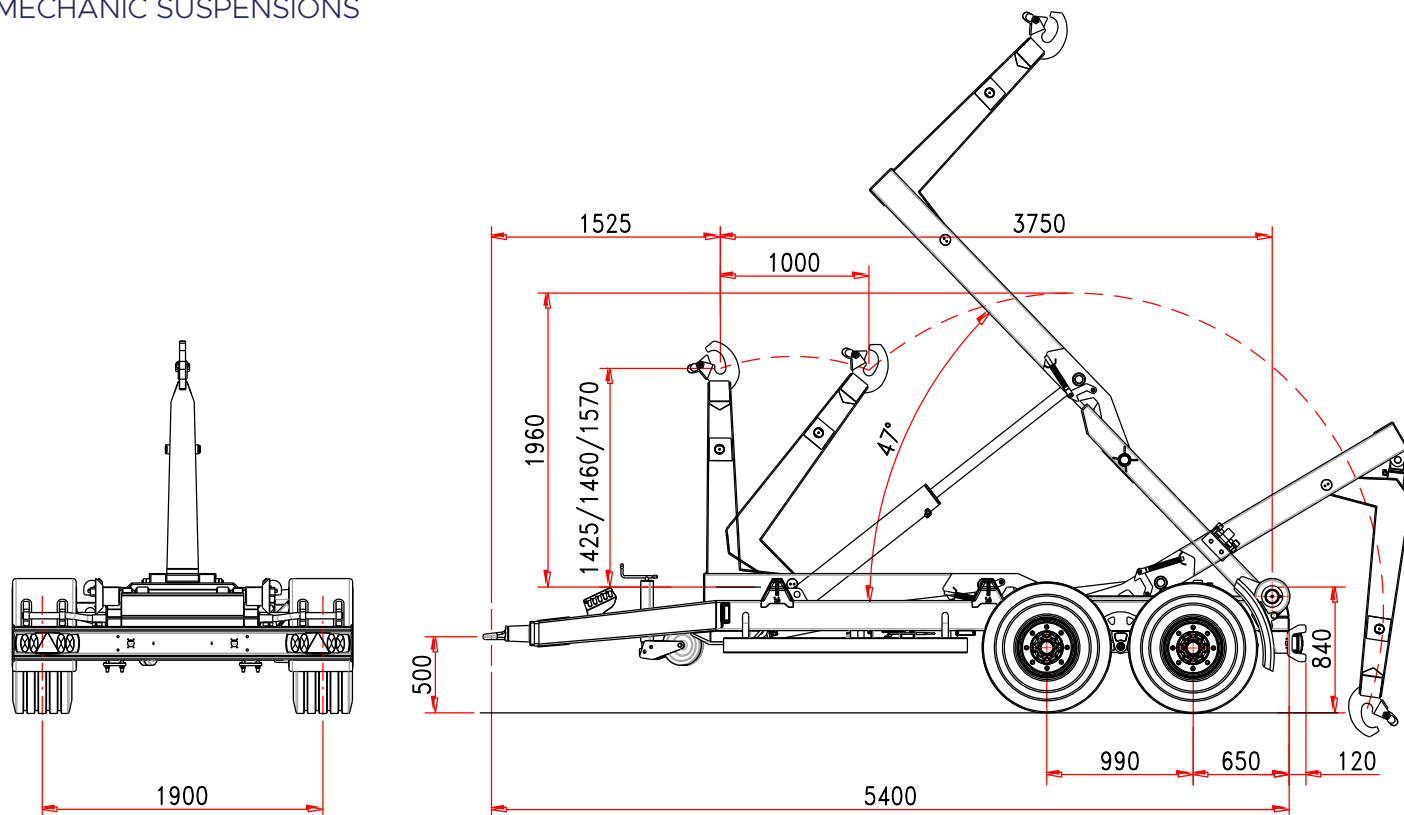
ITR8.12	_____ ■	3/4
ITR10.16	_____ ■	5/6
ITR16.21	_____ ■	7/8
ITR18.23	_____ ■	9/10
ITR18.23H	_____ ■	11/12
ITR18.23/6	_____ ■	13/14
ITR18.23/6H	_____ ■	15/16





2 AXLES HOOKLIFT TRAILER ITR 8.12

ARTICULATED
MECHANIC SUSPENSIONS



Standard Features

CHASSIS

Frame section	200 x 100 mm
Drawbar	fixed
Leaf spring suspension	12 t
Axles wheelbase	990 mm
Axles section	2 x 90 mm
Axles	fixed+fixed
Track	1900 mm
Brake drums	300 x 90 mm
Braking system	hydraulic
Towing eye	fixed type
Support foot	mechanic
Wheel size	400/60-15,5
Chassis loading level	840 mm

WEIGHT AND DIMENSION

Gross Trailer Weight (G.T.W.)	12 t
Container handling cap.	3000/4600 mm
Max speed	40 km/h
(*) Tare	2250 kg

ARTICULATED ARM

Run	1000 mm
Hook level	1425/1460/1570
Container internal/external locking	hydraulic
Tipping angle	47°
Tipping capacity	10 t
Lifting capacity	10 t

OLEO-DYNAMIC SYSTEM

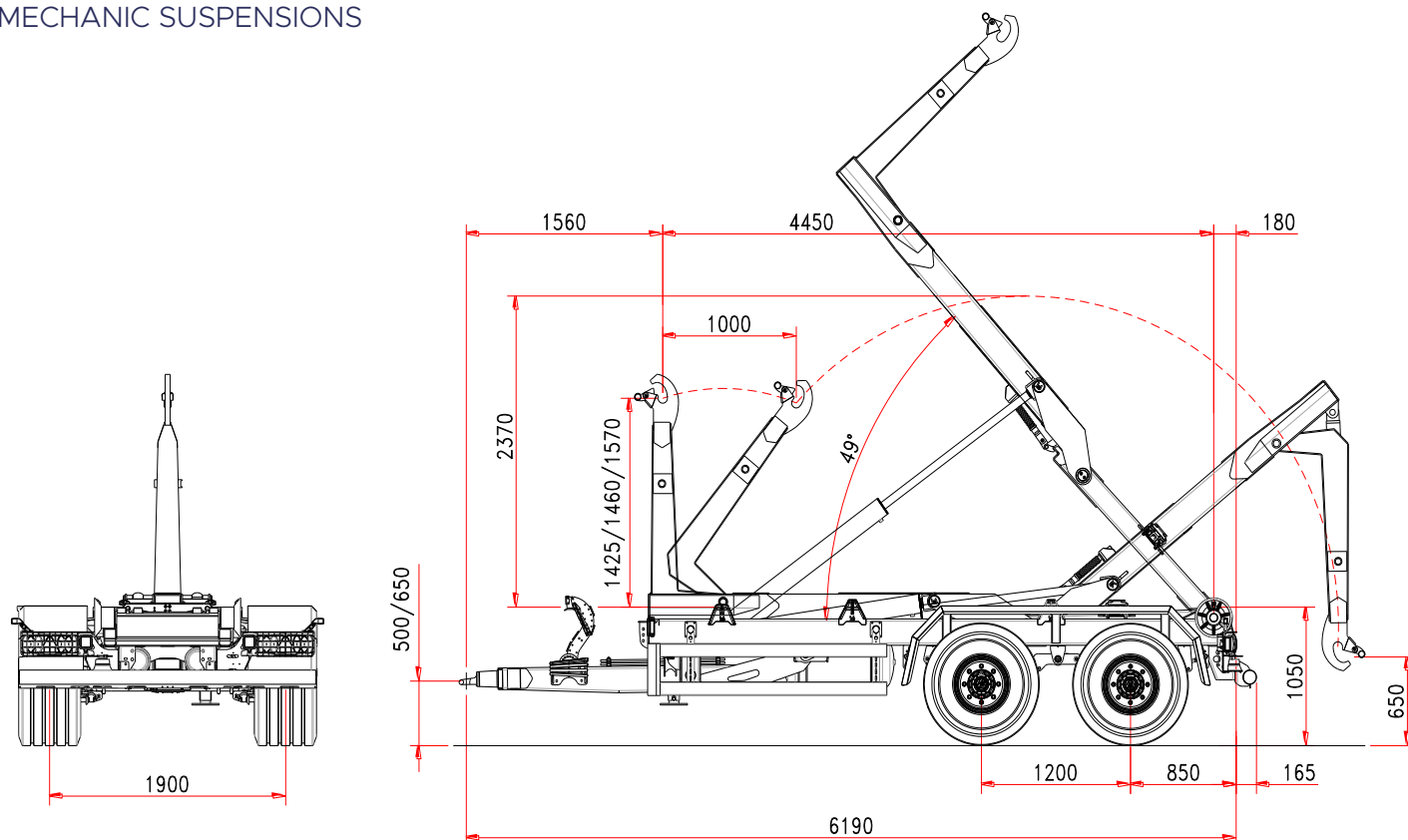
Tractor hydraulics	3 controls d. a.
Oil volume (hooklift filled)	18 l
Hooklift filled:	
Cylinders oil operation demand	
Tipping	4,6 l
Loading/unloading	5,2 l

(*) Tare: the trailer weight is referred to the basic unit without options and accessories.



2 AXLES HOOKLIFT TRAILER ITR 10.16

ARTICULATED
MECHANIC SUSPENSIONS



Standard Features

CHASSIS

Frame section	200 x 100 mm
Draw bar	silent blocks
Leaf spring suspension	16 t
Axles wheelbase	1200 mm
Axles section	2 x 100 mm
Axles	fixed + fixed
Track	1900 mm
Brake drums	350 x 90 mm
Braking system	hydraulic
Towing eye	turning
Support foot	hydraulic
Wheel size	500/50-17,5
Chassis loading level	1050 mm

WEIGHT AND DIMENSION

Gross Trailer Weight (G.T.W.)	16 t
Container handling cap.	3500/5500 mm
Max speed	40 km/h
(*) Tare	3500 kg

ARTICULATED ARM

Run	1000 mm
Hook level	1425/1460/1570
Container internal/external locking	hydraulic
Tipping angle	49°
Tipping capacity	10 t
Lifting capacity	10 t

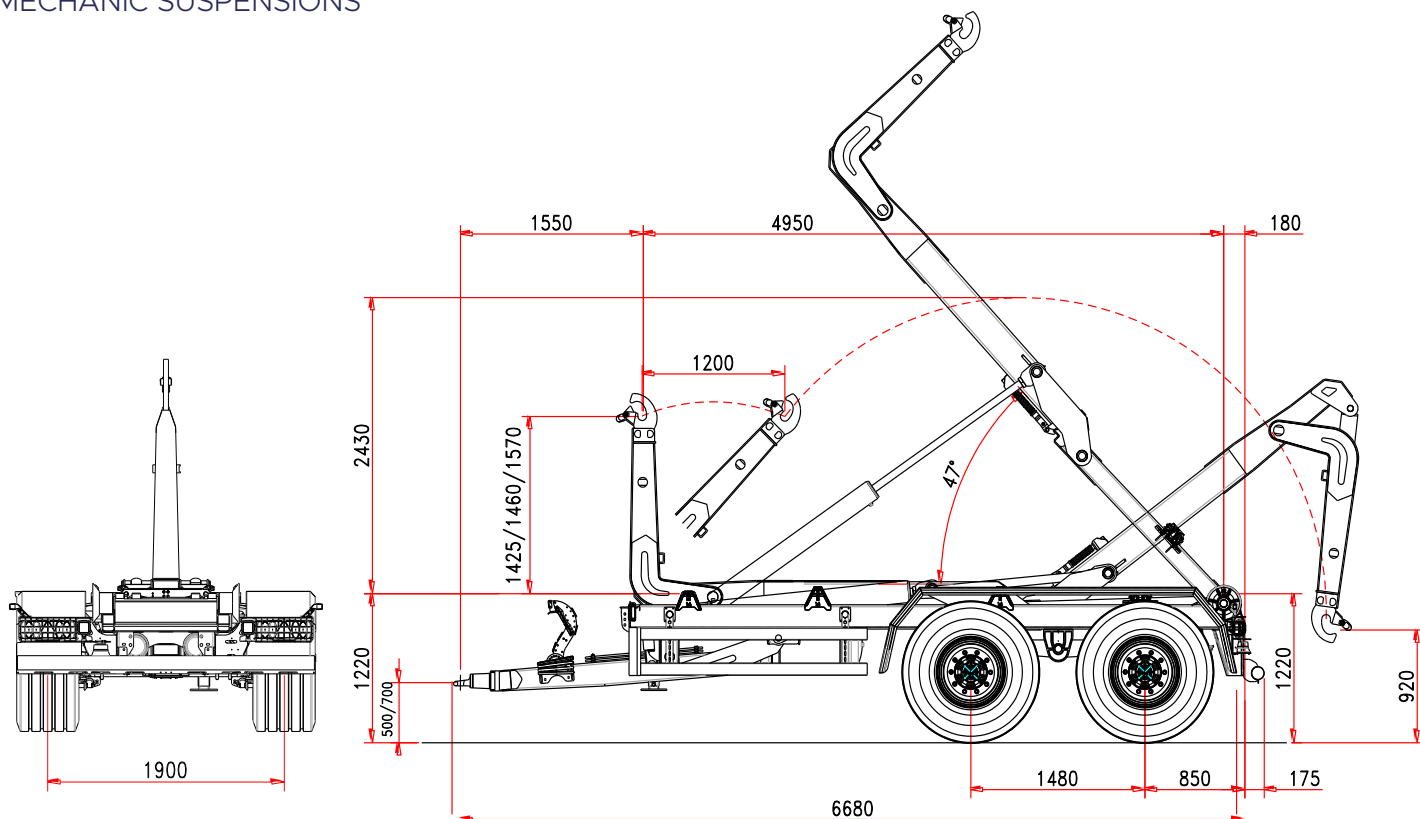
OLEO-DYNAMIC SYSTEM

Tractor hydraulics	3 controls d. a.
Oil volume (hooklift filled)	30 l
Hooklift filled:	
Cylinders oil operation demand	
Tipping	6,8 l
Loading/unloading	7,4 l

(*) Tare: the trailer weight is referred to the basic unit without options and accessories.



2 AXLES HOOKLIFT TRAILER ITR 16.21 ARTICULATED MECHANIC SUSPENSIONS



Standard Features

CHASSIS

Frame section	200 x 100 mm
Draw bar	silent blocks
Leaf spring suspension	21 t
Axles wheelbase	1480 mm
Axles section	2 x 110 mm
Axles	fixed + fixed
Track	2000 mm
Brake drums	400 x 80 mm
Braking system	hydraulic
Towing eye	turning
Support foot	hydraulic
Wheel size	500/60 R22,5
Chassis loading level	1220 mm

WEIGHT AND DIMENSION

Gross Trailer Weight (G.T.W.)	21 t
Container handling cap.	4000/6000 mm
Max speed	40 km/h
(*) Tare	4680 kg

ARTICULATED ARM

Run	1200 mm
Hook level	1425/1460/1570
Container internal/external locking	hydraulic
Tipping angle	47°
Tipping capacity	16 t
Lifting capacity	16 t

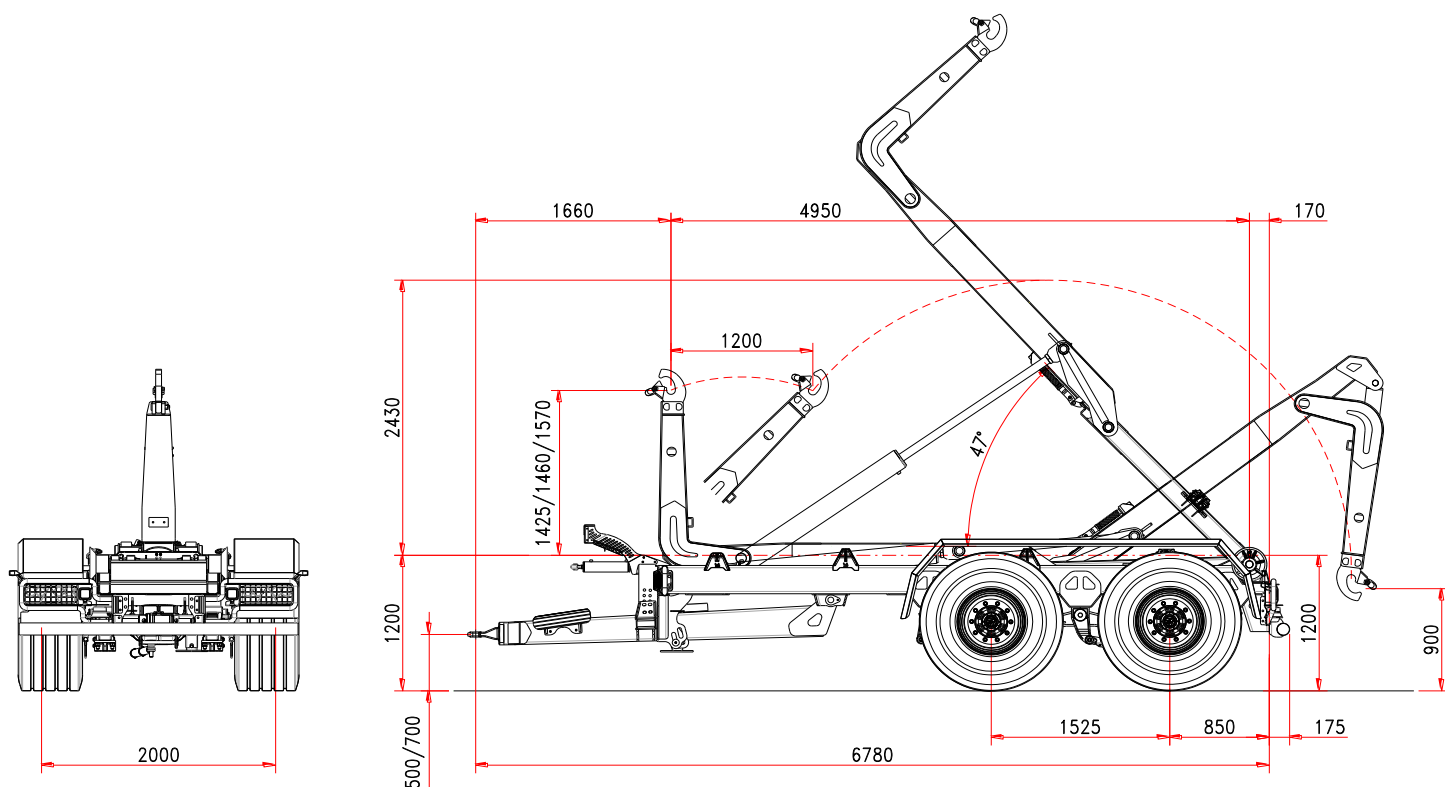
OLEO-DYNAMIC SYSTEM

Tractor hydraulics	3 controls d. a.
Oil volume (hooklift filled)	45 l
Hooklift filled:	
Cylinders oil operation demand	
Tipping	8 l
Loading/unloading	9,3 l

(*) Tare: the trailer weight is referred to the basic unit without options and accessories.



2 AXLES HOOKLIFT TRAILER ITR 18.23 ARTICULATED MECHANIC SUSPENSIONS



Standard Features

CHASSIS

Frame section	250 x 100 mm
Draw bar	silent blocks
Leaf spring suspension	tandem 24 t
Axles wheelbase	1525 mm
Axles section	2 x 110 mm
Axles	fixed + fixed
Track	2000 mm
Brake drums	406 x 120 mm
Braking system	hydraulic
Towing eye	turning
Support foot	hydraulic
Wheel size	550/60 R22,5
Chassis loading level	1200 mm
3 rd point hydraulic stab. cylinder	standard

WEIGHT AND DIMENSION

Gross Trailer Weight (G.T.W.)	23 t
Container handling cap.	4000/6000 mm
Max speed	40 km/h
(*) Tare	5100 kg

ARTICULATED ARM

Run	1200 mm
Hook level	1425/1460/1570
Container internal/external locking	hydraulic
Tipping angle	47°
Hoist start cylinder	standard
Tipping capacity	18 t
Lifting capacity	18 t

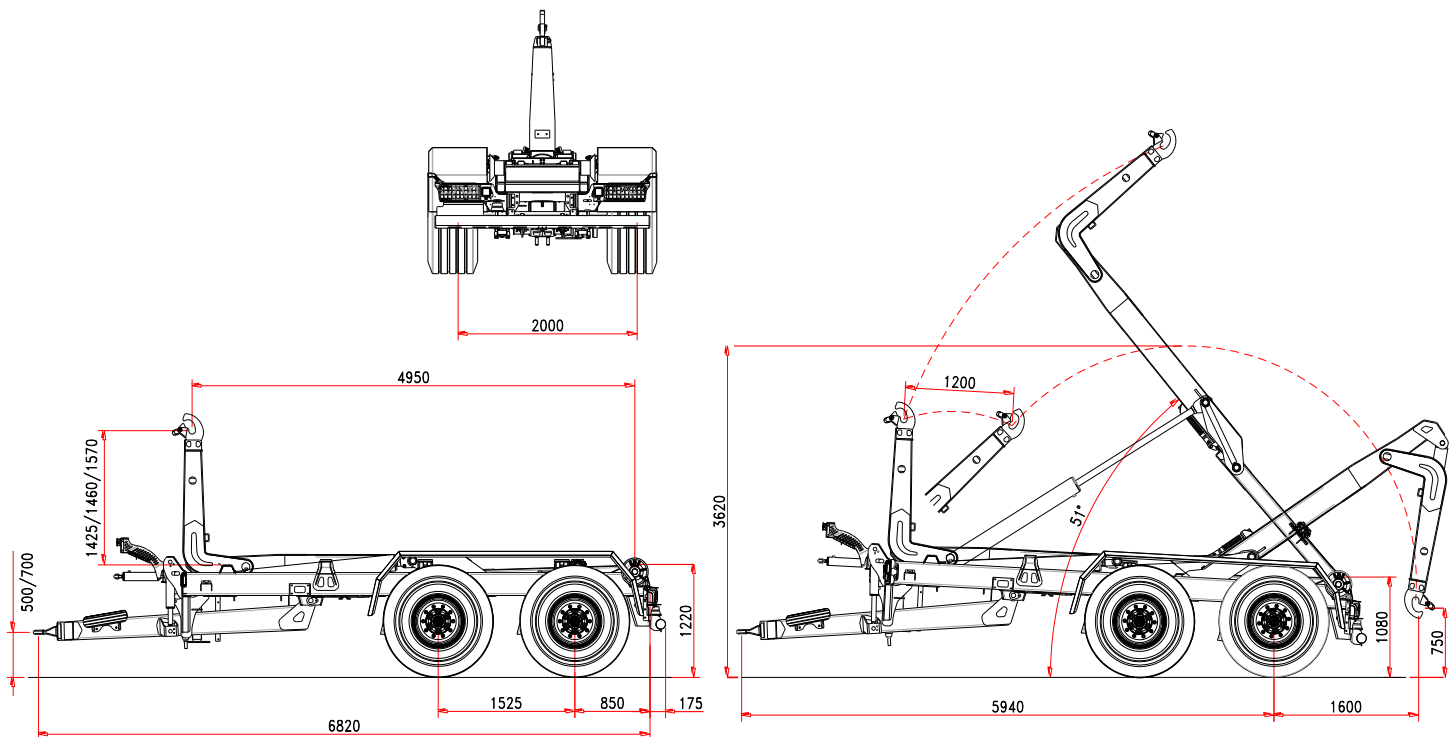
OLEO-DYNAMIC SYSTEM

Tractor hydraulics	2 controls d. a.
Oil volume (hooklift filled)	46 l
Hooklift filled:	
Cylinders oil operation demand	
Tipping	11,4 l
Loading/unloading	12,7 l
3 sections electro-valves with control	Bobeasy base

(*) Tare: the trailer weight is referred to the basic unit without options and accessories.



2 AXLES HOOKLIFT TRAILER ITR 18.23H ARTICULATED HYDRAULIC SUSPENSIONS



Standard Features

CHASSIS

Frame section	250 x 100 mm
Draw bar	hydraulic
Leaf spring suspension	24 t
Axles wheelbase	1525 mm
Axles section	2 x 150 mm
Axles	fixed + fixed
Track	2000 mm
Brake drums	406 x 120 mm
Braking system	hydraulic
Towing eye	turning
Support foot	hydraulic
Wheel size	550/60 R22,5
Chassis loading level	1220 mm
3 rd point hydraulic stab. cylinder	standard

WEIGHT AND DIMENSION

Gross Trailer Weight (G.T.W.)	23 t
Container handling cap.	4000/6000 mm
Max speed	40 km/h
(*) Tare	5200 kg

ARTICULATED ARM

Run	1200 mm
Hook level	1425/1460/1570
Container internal/external locking	hydraulic
Tipping angle	51°
Hoist start cylinder	standard
Tipping capacity	18 t
Lifting capacity	18 t

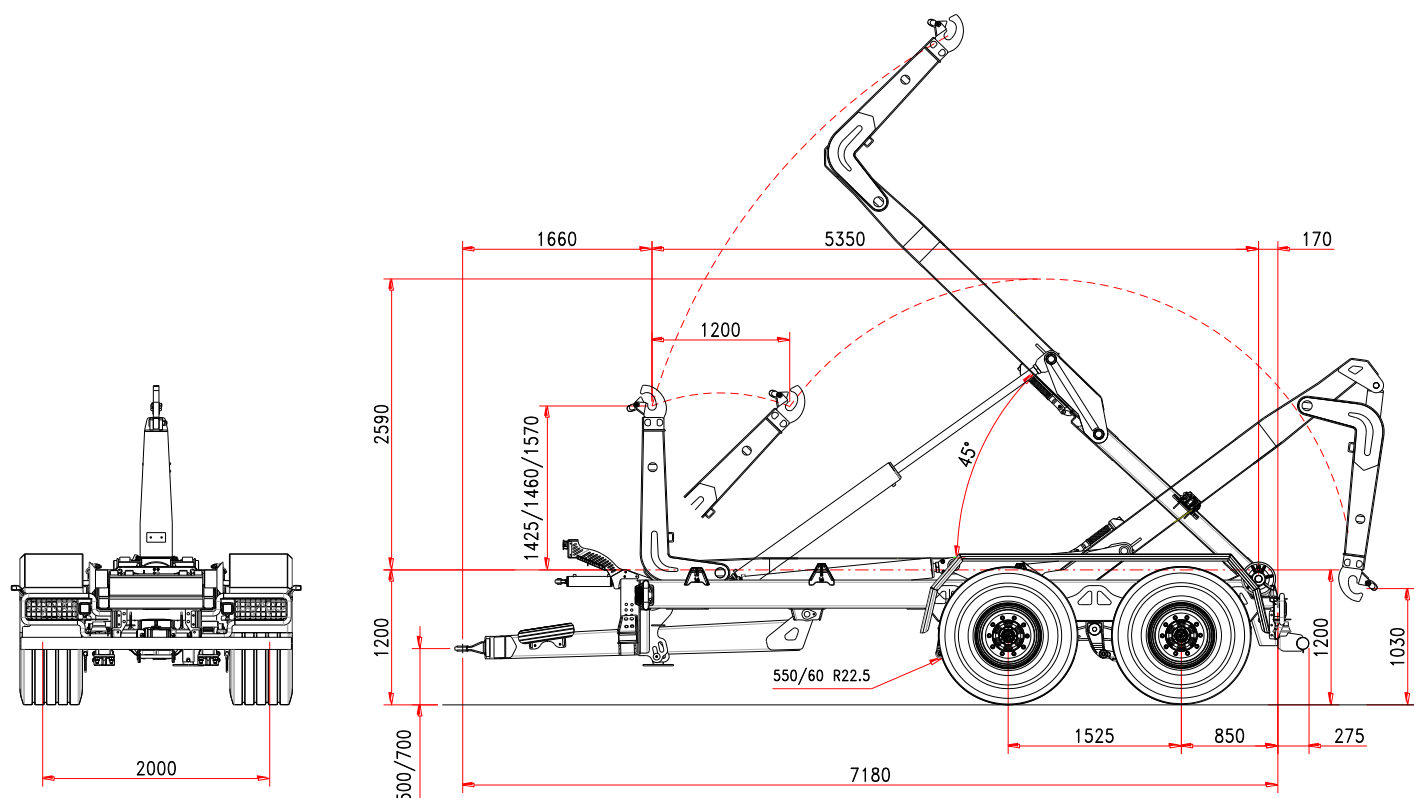
OLEO-DYNAMIC SYSTEM

Tractor hydraulics	3 controls d. a.
Oil volume (hooklift filled)	47 l
Hooklift filled:	
Cylinders oil operation demand	
Tipping	11,4 l
Loading/unloading	12,7 l
3 sections electro-valves with control Bobeasy base	

(*) Tare: the trailer weight is referred to the basic unit without options and accessories.



2 AXLES HOOKLIFT TRAILER ITR 18.23/6
 ARTICULATED
 MECHANIC SUSPENSIONS



Standard Features

CHASSIS

Frame section	250 x 100 mm
Draw bar	silent blocks
Leaf spring suspension	tandem 24 t
Axles wheelbase	1525 mm
Axles section	2 x 110 mm
Axles	fixed + fixed
Track	2000 mm
Brake drums	406 x 120 mm
Braking system	hydraulic
Towing eye	turning
Support foot	hydraulic
Wheel size	550/60 R22,5
Chassis loading level	1200 mm
3 rd point hydraulic stab. cylinder	standard

WEIGHT AND DIMENSION

Gross Trailer Weight (G.T.W.)	23 t
Container handling cap.	4500/6200 mm
Max speed	40 km/h
(*) Tare	5300 kg

ARTICULATED ARM

Run	1200 mm
Hook level	1425/1460/1570
Container internal/external locking	hydraulic
Tipping angle	47°
Hoist start cylinder	standard
Tipping capacity	18 t
Lifting capacity	18 t

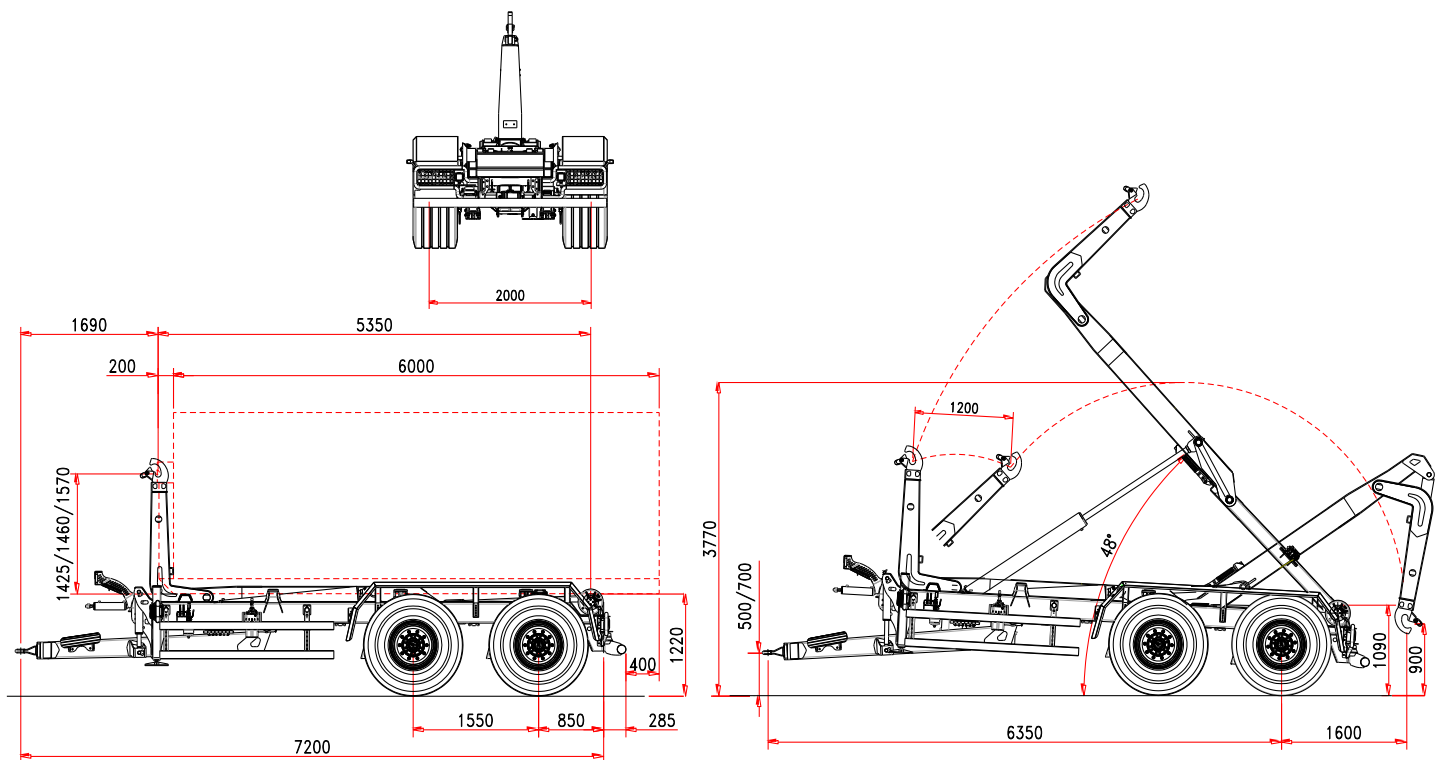
OLEO-DYNAMIC SYSTEM

Tractor hydraulics	4 controls d.e.
Oil volume (hooklift filled)	46 l
Hooklift filled:	
Cylinders oil operation demand	
Tipping	11,4 l
Loading/unloading	12,7 l
3 sections electro-valves with control	Bobeasy base

(*) Tare: the trailer weight is referred to the basic unit without options and accessories.



2 AXLES HOOKLIFT TRAILER ITR 18.23/6H
 ARTICULATED
 HYDRAULIC SUSPENSIONS



Standard Features

CHASSIS

Frame section	250 x 100 mm
Draw bar	hydraulic
Leaf spring suspension	24 t
Axles wheelbase	1550 mm
Axles section	2 x 150 mm
Axles	fixed + fixed
Track	2000 mm
Brake drums	406 x 120 mm
Braking system	hydraulic
Towing eye	turning
Support foot	hydraulic
Wheel size	550/60 R22,5
Chassis loading level	1220 mm
3 rd point hydraulic stab. cylinder	standard

WEIGHT AND DIMENSION

Gross Trailer Weight (G.T.W.)	23 t
Container handling cap.	4500/6200 mm
Max speed	40 km/h
(*) Tare	5400 kg

ARTICULATED ARM

Run	1200 mm
Hook level	1425/1460/1570
Container internal/external locking	hydraulic
Tipping angle	48°
Hoist start cylinder	standard
Tipping capacity	18 t
Lifting capacity	18 t

OLEO-DYNAMIC SYSTEM

Tractor hydraulics	4 controls d.e.
Oil volume (hooklift filled)	47 l
Hooklift filled:	
Cylinders oil operation demand	
Tipping	11,4 l
Loading/unloading	12,7 l
3 sections electro-valves with control	Bobeasy base

(*) Tare: the trailer weight is referred to the basic unit without options and accessories.







ITRunner



ITRunner

Reg. Oltre Rea, 32
12060 Monchiero (CN) - Italy
Phone +39 0173 780 002
Fax +39 0173 780 700
Email: info@itranner.it

www.itrunner.it



Cod. 001 - BOB - 010521 - ENG



lift your life

