



ITR 8.12

ARTICULATED



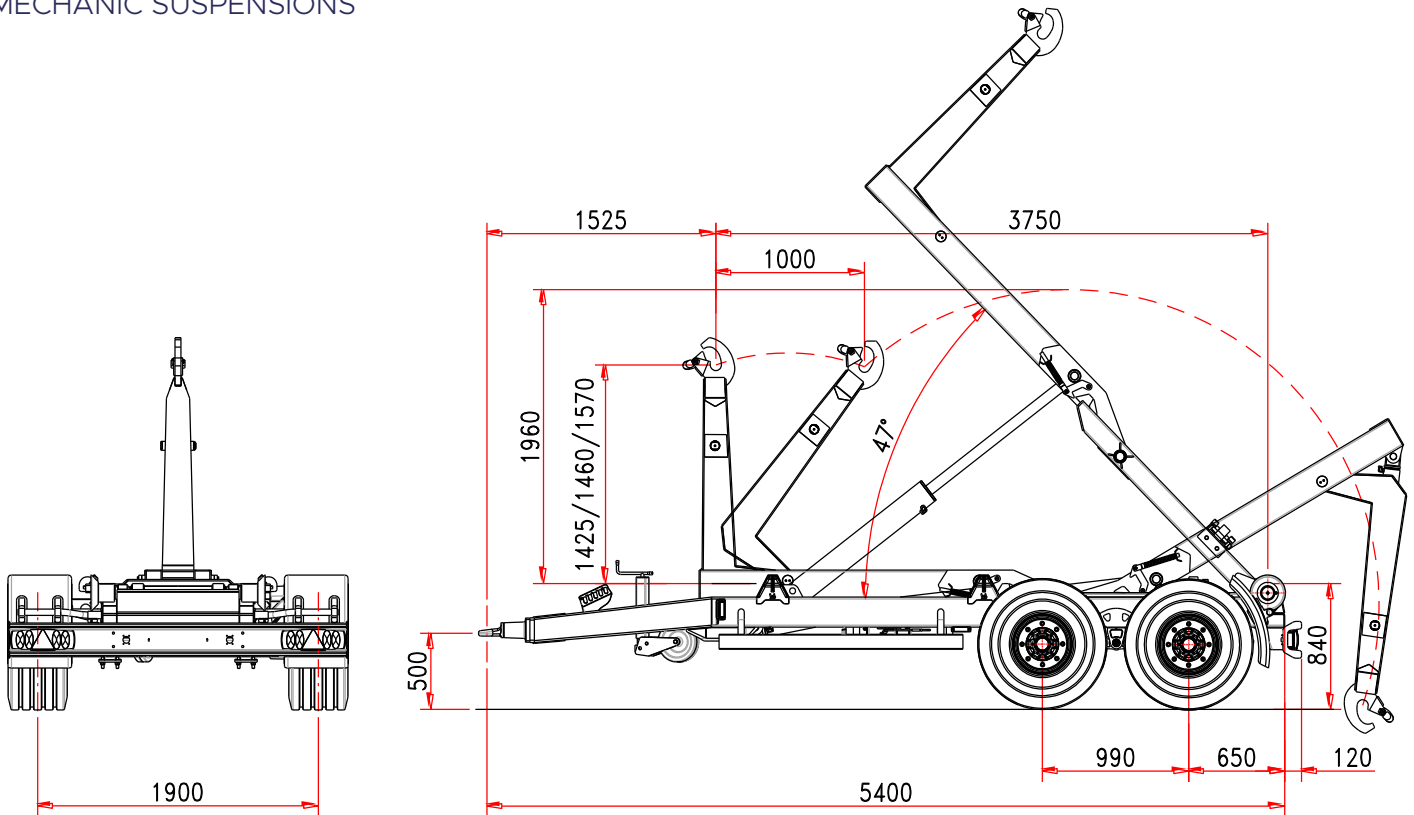
ITRunner



www.itrunner.it

2 AXLES HOOKLIFT TRAILER ITR 8.12

ARTICULATED
MECHANIC SUSPENSIONS



Standard Features

CHASSIS

Frame section	200 x 100 mm
Drawbar	fixed
Leaf spring suspension	12 t
Axles wheelbase	990 mm
Axles section	2 x 90 mm
Axles	fixed+fixed
Track	1900 mm
Brake drums	300 x 90 mm
Braking system	hydraulic
Towing eye	fixed type
Support foot	mechanic
Wheel size	400/60-15,5
Chassis loading level	840 mm

WEIGHT AND DIMENSION

Gross Trailer Weight (G.T.W.)	12 t
Container handling cap.	3000/4600 mm
Max speed	40 km/h
(*) Tare	2250 kg

ARTICULATED ARM

Run	1000 mm
Hook level	1425/1460/1570
Container internal/external locking	hydraulic
Tipping angle	47°
Tipping capacity	10 t
Lifting capacity	10 t

OLEO-DYNAMIC SYSTEM

Tractor hydraulics	3 controls d. a.
Oil volume (hooklift filled)	18 l
Hooklift filled:	
Cylinders oil operation demand	
Tipping	4,6 l
Loading/unloading	5,2 l

(*) Tare: the trailer weight is referred to the basic unit without options and accessories.

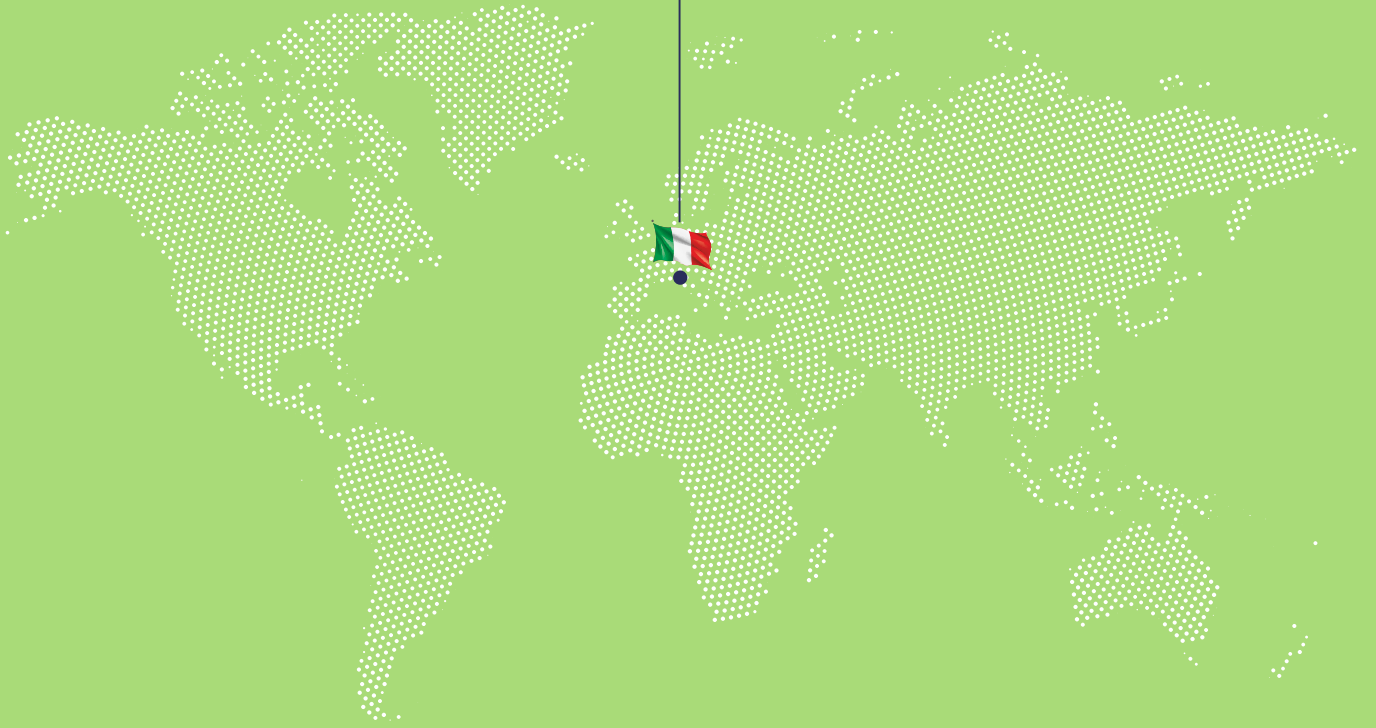
ITRunner

ITR 8.12
ARTICULATED





ITRunner



ITRunner

Reg. Oltre Rea, 32
12060 Monchiero (CN) - Italy
Phone +39 0173 780 002
Fax +39 0173 780 700
Email: info@itranner.it

www.itrunner.it



lift your life