



ITRK 16.21

TELESCOPIC ARTICULATED

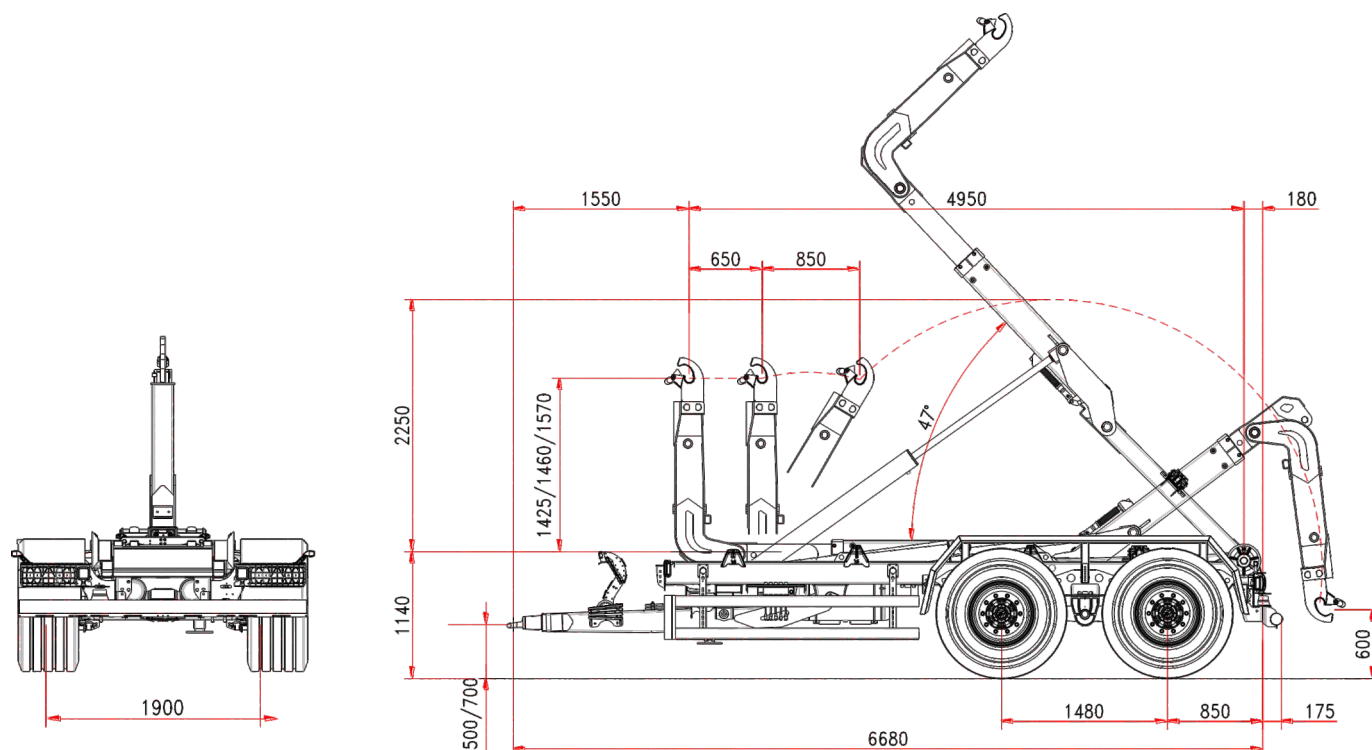


ITRunner



www.itrunner.it

2 AXLES HOOKLIFT ITRK 16.21 TELESCOPIC AND ARTICULATED MECHANIC SUSPENSIONS



Standard Features

CHASSIS

Frame section	200 x 100 mm
Draw bar	silent blocks
Leaf spring suspension	21 t
Axles wheelbase	1480 mm
Axles section	2 x 110 mm
Axles	fixed + fixed
Track	2000 mm
Brake drums	400 x 80 mm
Braking system	hydraulic
Towing eye	turning type
Support foot	hydraulic
Wheel size	500/60 R22,5
Chassis loading level	1140 mm
Front stab. Cylinder 3 rd point	standard

WEIGHT AND DIMENSION

Gross Trailer Weight (G.T.W.)	21 t
Container handling cap.	4000/6000 mm
Max speed	40 km/h
(*) Tare	4800 kg

TELESCOPIC AND ARTICULATED ARM

Run	650 + 850 mm
Hook level	1425/1460/1570
Container internal/external locking	hydraulic
Tipping angle	47°
Tipping capacity	16 t
Lifting capacity	16 t

OLEO-DYNAMIC SYSTEM

Tractor hydraulics	4 controls d.a.
Oil volume (hooklift filled)	45 l
Hooklift filled:	
Cylinders oil operation demand	
Tipping	8 l
Loading/unloading	9,3 l

(*) Tare: the trailer weight is referred to the basic unit without options and accessories.

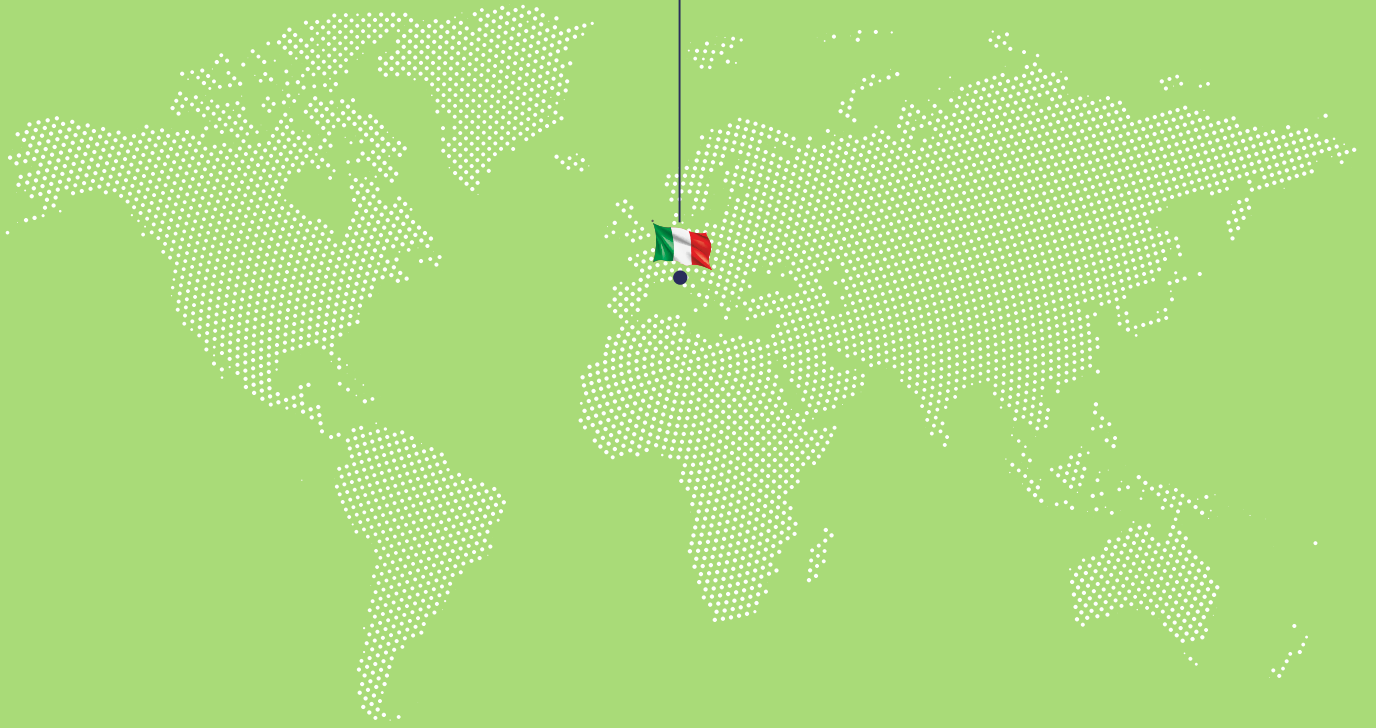
ITRunner

ITRK 16.21
TELESCOPIC ARTICULATED





ITRunner



ITRunner

Reg. Oltre Rea, 32
12060 Monchiero (CN) - Italy
Phone +39 0173 780 002
Fax +39 0173 780 700
Email: info@itranner.it

www.itrunner.it



lift your life