

# **ITR** *Articulated*

*Articolate · Articulées · Knickarm*



***ITRunner***

**KEEP CALM AND FARM**

www.itrunner.it

SP 159

4

bob



Chiabotti Rea

SP 661



Da 45 anni produciamo attrezzature per il trasporto di materiali sviluppando un know how globale in grado di renderci una delle aziende di riferimento a livello internazionale.



For 45 years we have been producing equipment for the transport of materials developing a global know-how able to make us one of the reference companies at international level.



Depuis 45 ans, nous produisons des équipements pour le transport de matériaux développant un savoir-faire mondial capable de faire de nous l'une des sociétés de référence au niveau international



Seit 45 Jahren produzieren wir Anlagen für den Transport von Materialien und entwickeln ein globales Know-how, das uns zu einem der Referenzunternehmen auf internationaler Ebene machen kann

Strada Santa Lucia

**DNV**

## MANAGEMENT SYSTEM CERTIFICATE

Certificate no.: CERT-09968-2001-AQ-TRI-SINCERT Initial certification date: 31 December 2001 Valid: 12 December 2022 - 11 December 2025

This is to certify that the management system of **B.O.B. Sistemi Idraulici S.p.A. - Sede Legale e Operativa**  
 Regione Oltre Rea, 32 - 12060 Monchiero (CN) - Italy  
 and the sites as mentioned in the appendix accompanying this certificate  
 has been found to conform to the Quality Management System standard:  
**ISO 9001:2015**

This certificate is valid for the following scope:  
**Design, manufacture, trade and assistance of equipment, agricultural hooklift trailers, hooklifts and loaders for industrial and agricultural vehicles (IAF: 18)**

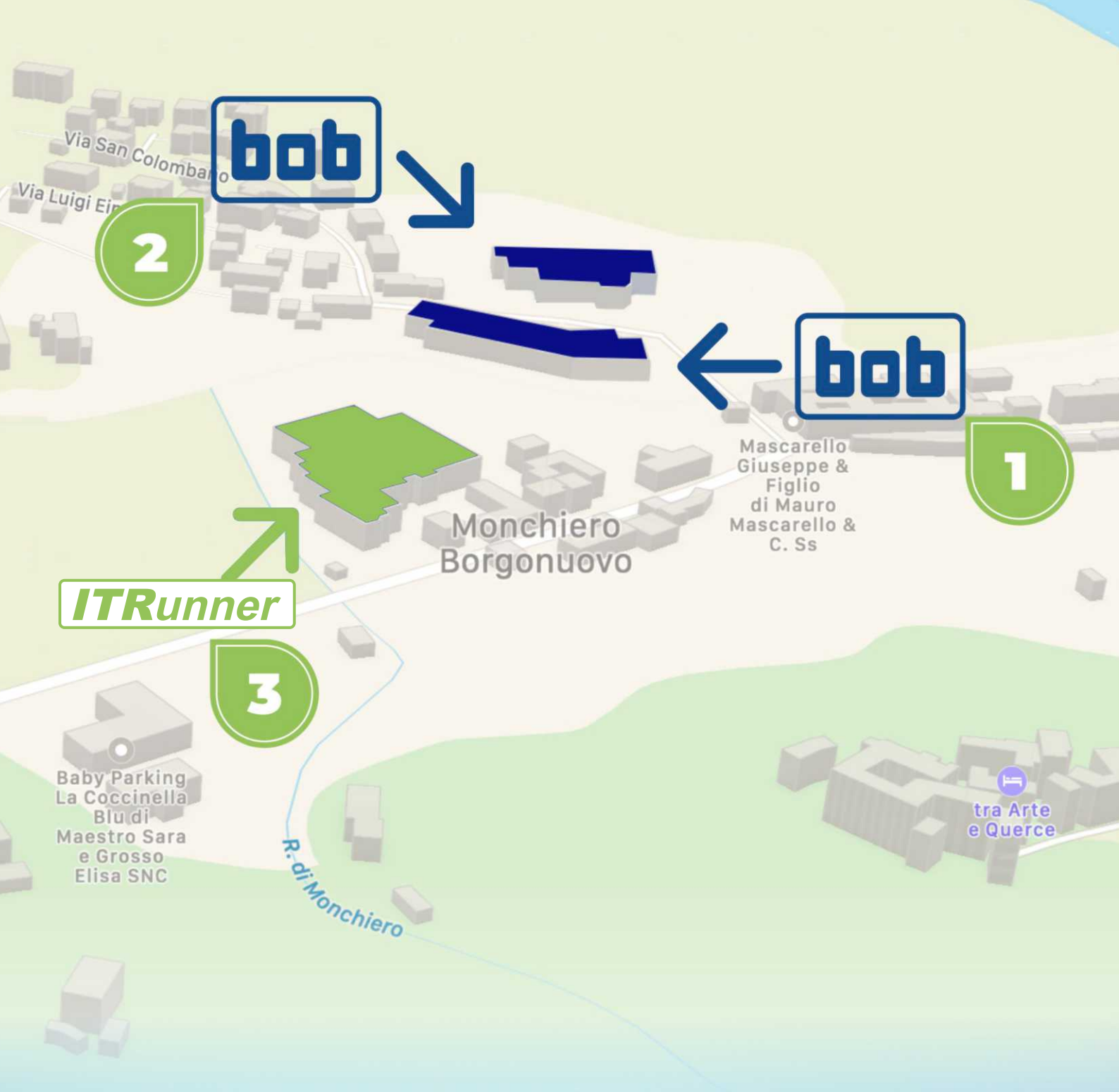
Place and date:  
 Vimerate (MB), 18 November 2022

**ACCREDIA**  
ACCREDITED BODY FOR CERTIFICATION

For the issuing office:  
 DNV - Business Assurance  
 Via Energy Park, 14 - 20871 Vimerate (MB) - Italy

*Claudia Barocini*  
 Claudia Barocini  
 Management Representative

Lack of fulfillment of conditions as set out in the Certification Agreement may render this Certificate invalid.  
 ACCREDITED UNIT: DNV Business Assurance Italy S.r.l., Via Energy Park, 14 - 20871 Vimerate (MB) - Italy - TEL: +39 68 99 905 - www.dnv.it

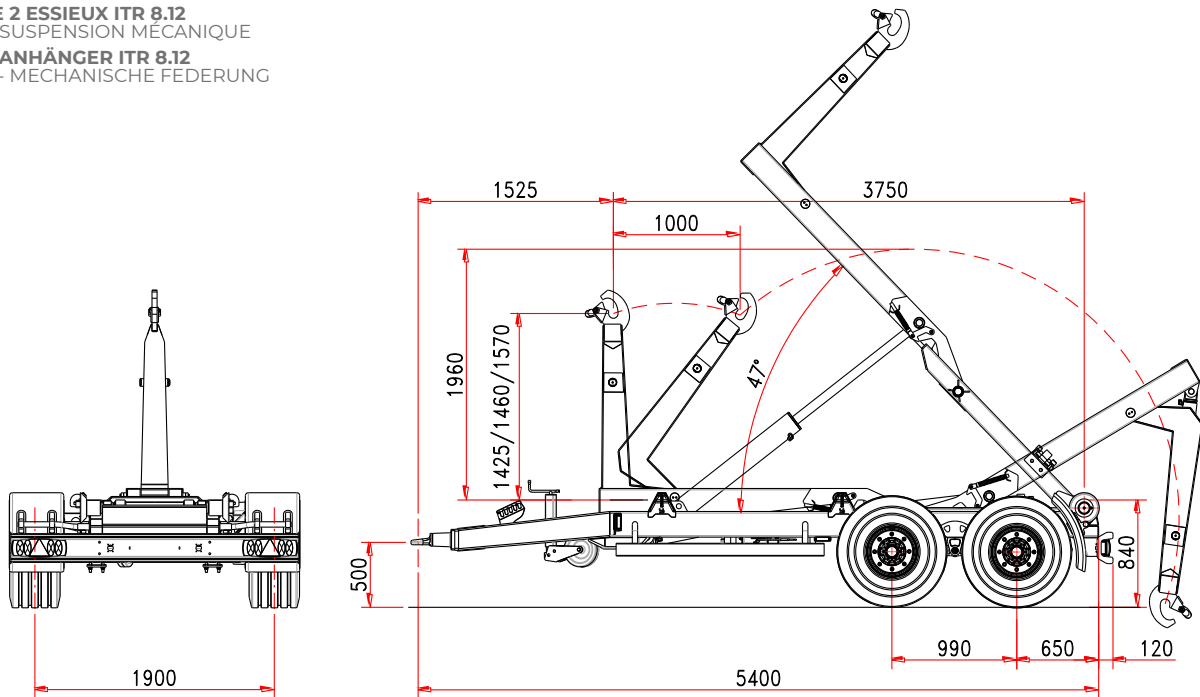




**RIMORCHIO 2 ASSI ITR 8.12**  
ARTICOLATO - SOSPENSIONI MECCANICHE  
**2 AXLES HOOKLIFT TRAILER ITR 8.12**  
ARTICULATED - MECHANIC SUSPENSIONS

**REMORQUE 2 ESSIEUX ITR 8.12**  
ARTICULÉ - SUSPENSION MÉCANIQUE

**HAKENLIFTANHÄNGER ITR 8.12**  
KNICKARM - MECHANISCHE FEDERUNG



## Caratteristiche Standard

## Standard Features

## Caractéristiques Standard

## Standard-Merkmale

### TELAIO

Sezione longheroni	200 x 100 mm
Sezioni assali	2 x 90 mm
Freni a tamburo	300 x 90 mm
Sezione ruote	400/60-15,5

### PESO E MISURE

P.T.T. (G.T.W.)	12 t
Dimensione Min./Max cassone	3000/4600 mm
Max velocità	40 km/h
(*) Tara	2250 kg

### BRACCIO ARTICOLATO

Altezza gancio	1425/1460/1570
Bloccaggio container esterno	idraulico
Angolo di ribaltamento	47°
Max cap. ribaltamento	10 t
Max cap. carico	10 t

### SISTEMA IDRAULICO

Idraulica al trattore	3 elementi d.e.
-----------------------	-----------------

(\*) la tara è riferita all'attrezzatura base del rimorchio senza opzioni ed accessori

### CHASSIS

Section structure	200 x 100 mm
Section essieux	2 x 90 mm
Freins tambour	300 x 90 mm
Pneus	400/60-15,5

### POIDS ET DIMENSIONS

Poids totale remorque	12 t
Longueur conteneur	3000/4600 mm
Max vitesse	40 km/h
(*) Tara	2250 kg

### BRAS ARTICULE

Hauteur crochet	1425/1460/1570
Verrouillage conteneur	hydraulique
Angle de bennage	47°
Max capacité de bennage	10 t
Max capacité de charge	10 t

### SYSTÈME HYDRAULIQUE

Hydraulique tracteur	3 contrôles d.e.
----------------------	------------------

(\*) La tare de la remorque est référée à l'équipement base sans options et accessoires.

### CHASSIS

Frame section	200 x 100 mm
Axles section	2 x 90 mm
Brake drums	300 x 90 mm
Wheel size	400/60-15,5

### WEIGHT AND DIMENSION

Gross Trailer Weight (G.T.W.)	12 t
Container handling cap.	3000/4600 mm
Max speed	40 km/h
(*) Tare	2250 kg

### ARTICULATED ARM

Hook level	1425/1460/1570
Container internal/external locking	hydraulic
Tipping angle	47°
Tipping capacity	10 t
Lifting capacity	10 t

### OLEO-DYNAMIC SYSTEM

Tractor hydraulics	3 controls d. a.
--------------------	------------------

(\*) Tare: the trailer weight is referred to the basic unit without options and accessories.

### FAHRGESTELL

Rahmenquerschnitt	200 x 100 mm
Achsenquerschnitt	2 x 90 mm
Bremstrommel	300 x 90 mm
Bereifung	400/60-15,5

### MASSE UND GEWICHT

Gesamtgewicht	12 t
Containerlänge min./max	3000/4600 mm
Zul.Höchstgeschwindigkeit	40 km/h
(*) Leergewicht	2250 kg

### KNICKARM

Hakenhöhe	1425/1460/1570
Innere/äußere Containerverriegelung	hydraulisch
Kippwinkel	47°
kippkapazität	10 t
Hebekapazität	10 t

### HIDRAULIKANLAGE

Hydraulik am Traktor	3 doppelwirkende Steuerelemente
----------------------	---------------------------------

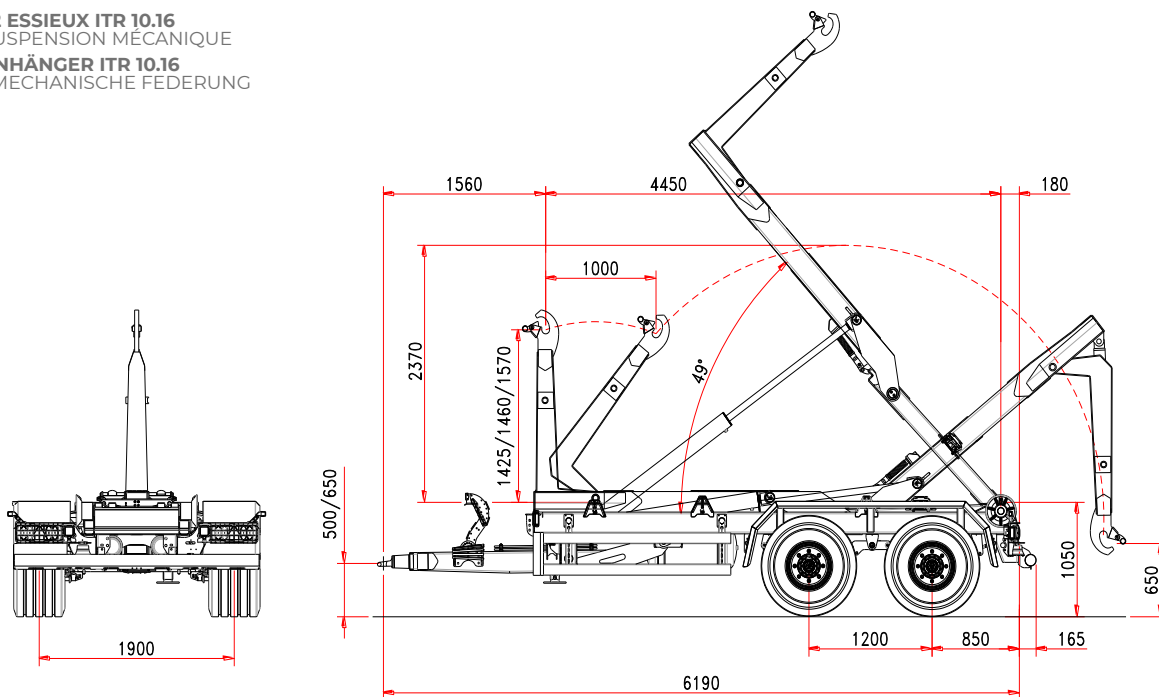
(\*) Leergewicht ohne Zusatzausstattungen und Sonderausrüstungen



**RIMORCHIO 2 ASSI ITR 10.16**  
ARTICOLATO - SOSPENSIONI MECCANICHE  
**2 AXLES HOOKLIFT TRAILER ITR 10.16**  
ARTICULATED - MECHANIC SUSPENSIONS

**REMORQUE 2 ESSIEUX ITR 10.16**  
ARTICULÉ - SUSPENSION MÉCANIQUE

**HAKENLIFTANHÄNGER ITR 10.16**  
KNICKARM - MECHANISCHE FEDERUNG



## Caratteristiche Standard

## Standard Features

## Caractéristiques Standard

## Standard-Merkmale

### TELAIO

Sezione longheroni	200 x 100 mm
Sezioni assali	2 x 100 mm
Freni a tamburo	350 x 90 mm
Sezione ruote	500/50-17

### PESO E MISURE

P.T.T. (G.T.W.)	16 t
Dimensione Min./Max cassone	3500/5500 mm
Max velocità	40 km/h
(*) Tara	3500 kg

### BRACCIO ARTICOLATO

Altezza gancio	1425/1460/1570
Bloccaggio container esterno	idraulico
Angolo di ribaltamento	49°
Max cap. ribaltamento	10 t
Max cap. carico	10 t

### SISTEMA IDRAULICO

Idraulica al trattore	3 elementi d.e.
-----------------------	-----------------

(\*) la tara è riferita all'attrezzatura base del rimorchio senza opzioni ed accessori

### CHASSIS

Section structure	200 x 100 mm
Section essieux	2 x 100 mm
Freins tambour	350 x 90 mm
Pneus	500/50-17

### POIDS ET DIMENSIONS

Poids totale remorque	16 t
Longueur conteneur	3500/5500 mm
Max vitesse	40 km/h
(*) Tara	3500 kg

### BRAS ARTICULE

Hauteur crochet	1425/1460/1570
Verrouillage conteneur	hydraulique
Angle de bennage	49°
Max capacité de bennage	10 t
Max capacité de charge	10 t

### SYSTÈME HYDRAULIQUE

Hydraulique tracteur	3 contrôles d.e.
----------------------	------------------

(\*) La tare de la remorque est référencé à l'équipement base sans options et accessoires.

### CHASSIS

Frame section	200 x 100 mm
Axles section	2 x 100 mm
Brake drums	350 x 90 mm
Wheel size	500/50-17

### WEIGHT AND DIMENSION

Gross Trailer Weight (G.T.W.)	16 t
Container handling cap.	3500/5500 mm
Max speed	40 km/h
(*) Tare	3500 kg

### ARTICULATED ARM

Hook level	1425/1460/1570
Container internal/external locking	hydraulic
Tipping angle	49°
Tipping capacity	10 t
Lifting capacity	10 t

### OLEO-DYNAMIC SYSTEM

Tractor hydraulics	3 controls d. a.
--------------------	------------------

(\*) Tare: the trailer weight is referred to the basic unit without options and accessories.

### FAHRGESTELL

Rahmenquerschnitt	200 x 100 mm
Achsenquerschnitt	2 x 100 mm
Bremstrommel	350 x 90 mm
Bereifung	500/50-17

### MASSE UND GEWICHT

Gesamtgewicht	16 t
Containerlänge min./max	3500/5500 mm
Zul.Höchstgeschwindigkeit	40 km/h
(*) Leergewicht	3500 kg

### KNICKARM

Hakenhöhe	1425/1460/1570
Innere/äußere Containerverriegelung	hydraulisch
Kippwinkel	49°
kippkapazität	10 t
Hebekapazität	10 t

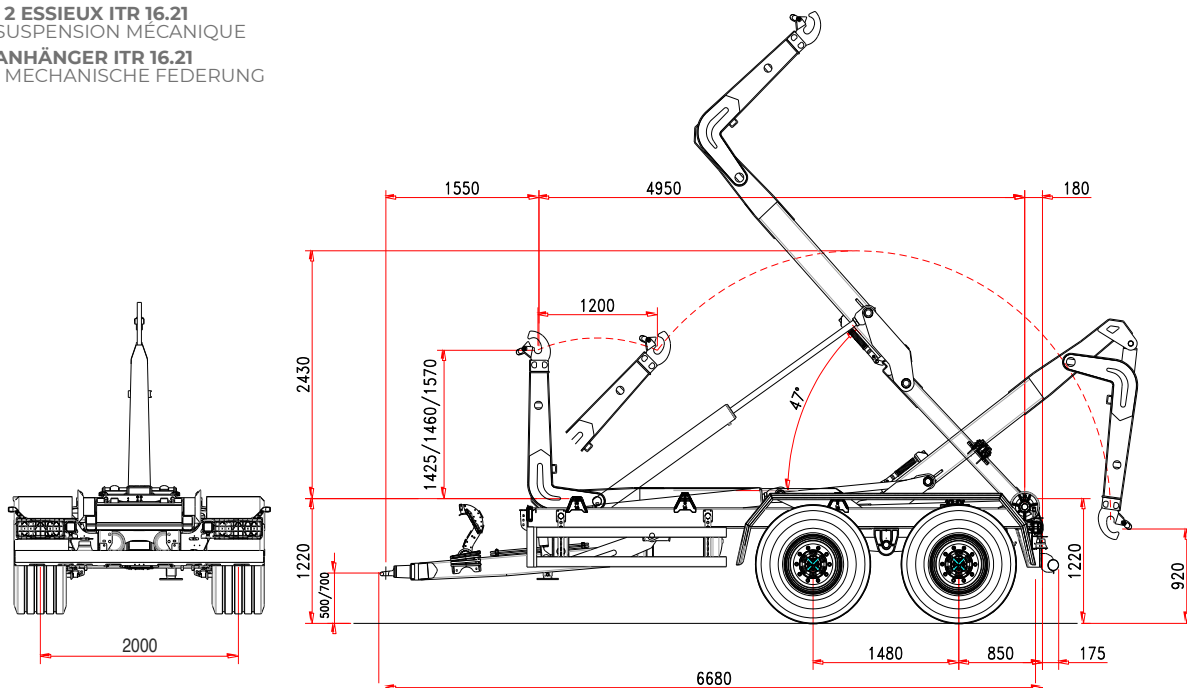
### HIDRAULIKANLAGE

Hydraulik am Traktor	3 doppelwirkende Steuerelemente
----------------------	---------------------------------

(\*) Leergewicht ohne Zusatzausstattungen und Sonderausrüstungen



**RIMORCHIO 2 ASSI ITR 16.21**  
ARTICOLATO - SOSPENSIONI MECCANICHE  
**2 AXLES HOOKLIFT TRAILER ITR 16.21**  
ARTICULATED - MECHANIC SUSPENSIONS  
**REMORQUE 2 ESSIEUX ITR 16.21**  
ARTICULÉ - SUSPENSION MÉCANIQUE  
**HAKENLIFTANHÄNGER ITR 16.21**  
KNICKARM - MECHANISCHE FEDERUNG




## Caratteristiche Standard

## Standard Features

## Caractéristiques Standard

## Standard-Merkmale

### TELAIO

	Sezione longheroni	200 x 100 mm
	Sezioni assali	2 x 110 mm
	Freni a tamburo	400 x 80 mm
	Sezione ruote	500/60-22,5

### PESO E MISURE

P.T.T. (G.T.W.)	21 t
Dimensione Min./Max cassone	4000/6000 mm
Max velocità	40 km/h
(*) Tara	4680 kg

### BRACCIO ARTICOLATO


Altezza gancio	1425/1460/1570
Bloccaggio container esterno	idraulico
Angolo di ribaltamento	47°
Max cap. ribaltamento	16 t
Max cap. carico	16 t

### SISTEMA IDRAULICO

Idraulica al trattore	3 elementi d.e.
-----------------------	-----------------

(\*) la tara è riferita all'attrezzatura base del rimorchio senza opzioni ed accessori

### CHASSIS

	Section structure	200 x 100 mm
	Section essieux	2 x 110 mm
	Freins tambour	400 x 80 mm
	Pneus	500/60-22,5

### POIDS ET DIMENSIONS

Poids totale remorque	21 t
Longueur conteneur	4000/6000 mm
Max vitesse	40 km/h
(*) Tara	4680 kg

### BRAS ARTICULE


Hauteur crochet	1425/1460/1570
Verrouillage conteneur	hydraulique
Angle de bennage	47°
Max capacité de bennage	16 t
Max capacité de charge	16 t

### SYSTÈME HYDRAULIQUE

Hydraulique tracteur	3 contrôles d.e.
----------------------	------------------

(\*) La tare de la remorque est référée à l'équipement base sans options et accessoires.

### CHASSIS

	Frame section	200 x 100 mm
	Axles section	2 x 110 mm
	Brake drums	400 x 80 mm
	Wheel size	500/60-22,5

### WEIGHT AND DIMENSION

Gross Trailer Weight (G.T.W.)	21 t
Container handling cap.	4000/6000 mm
Max speed	40 km/h
(*) Tare	4680 kg

### ARTICULATED ARM


Hook level	1425/1460/1570
Container internal/external locking	hydraulic
Tipping angle	47°
Tipping capacity	16 t
Lifting capacity	16 t

### OLEO-DYNAMIC SYSTEM

Tractor hydraulics	3 controls d. a.
--------------------	------------------

(\*) Tare: the trailer weight is referred to the basic unit without options and accessories.

### FAHRGESTELL

	Rahmenquerschnitt	200 x 100 mm
	Achsenquerschnitt	2 x 110 mm
	Bremstrommel	400 x 80 mm
	Bereifung	500/60-22,5

### MASSE UND GEWICHT

Gesamtgewicht	21 t
Containerlänge min./max	4000/6000 mm
Zul.Höchstgeschwindigkeit	40 km/h
(*) Leergewicht	4680 kg

### KNICKARM

Hakenhöhe	1425/1460/1570
Innere/äußere Containerverriegelung	hydraulisch
Kippwinkel	47°
kippkapazität	16 t
Hebekapazität	16 t

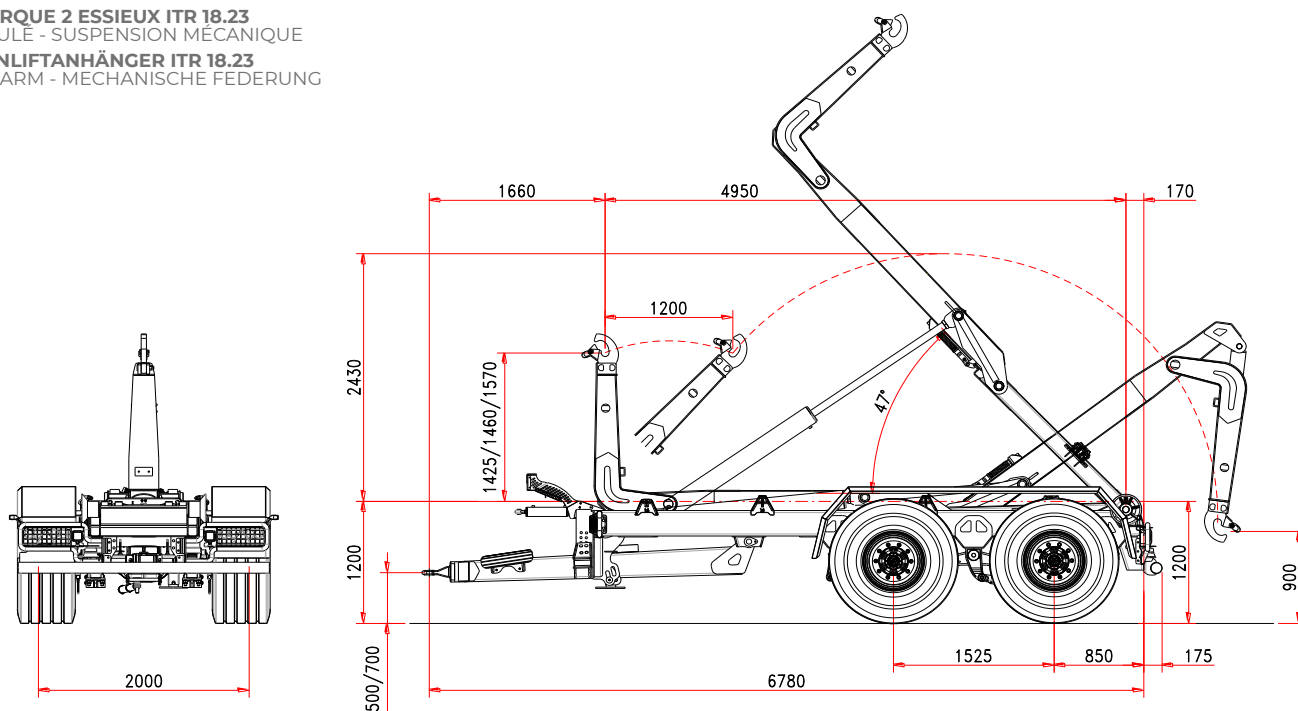
### HIDRAULIKANLAGE

Hydraulik am Traktor	3 doppelwirkende
----------------------	------------------

(\*) Leergewicht ohne Zusatzausstattungen und Sonderausrüstungen



**RIMORCHIO 2 ASSI ITR 18.23**  
ARTICOLATO - SOSPENSIONI MECCANICHE  
**2 AXLES HOOKLIFT TRAILER ITR 18.23**  
ARTICULATED - MECHANIC SUSPENSIONS  
**REMORQUE 2 ESSIEUX ITR 18.23**  
ARTICULÉ - SUSPENSION MÉCANIQUE  
**HAKENLIFTANHÄNGER ITR 18.23**  
KNICKARM - MECHANISCHE FEDERUNG



## Caratteristiche Standard

## Standard Features

## Caractéristiques Standard

## Standard-Merkmale

### TELAIO

Sezione longheroni	250 x 100 mm
Sezioni assali	2 x 110 mm
Freni a tamburo	406 x 120 mm
Sezione ruote	550/60-22,5

### PESO E MISURE

P.T.T. (G.T.W.)	23 t
Dimensione Min./Max cassone	4000/6000 mm
Max velocità	40 km/h
(*) Tara	5100 kg

### BRACCIO ARTICOLATO

Altezza gancio	1425/1460/1570
Bloccaggio container esterno	idraulico
Angolo di ribaltamento	47°
Max cap. ribaltamento	18 t
Max cap. carico	18 t

### SISTEMA IDRAULICO

Idraulica al trattore	2 elementi d.e.
-----------------------	-----------------

(\*) la tara è riferita all'attrezzatura base del rimorchio senza opzioni ed accessori

### CHASSIS

Section structure	250 x 100 mm
Section essieux	2 x 110 mm
Freins tambour	406 x 120 mm
Pneus	550/60-22,5

### POIDS ET DIMENSIONS

Poids totale remorque	23 t
Longueur conteneur	4000/6000 mm
Max vitesse	40 km/h
(*) Tara	5100 kg

### BRAS ARTICULE

Hauteur crochet	1425/1460/1570
Verrouillage conteneur	hydraulique
Angle de bennage	47°
Max capacité de bennage	18 t
Max capacité de charge	18 t

### SYSTÈME HYDRAULIQUE

Hydraulique tracteur	2 contrôles d.e.
----------------------	------------------

(\*) La tare de la remorque est référée à l'équipement base sans options et accessoires.

### CHASSIS

Frame section	250 x 100 mm
Axles section	2 x 110 mm
Brake drums	406 x 120 mm
Wheel size	550/60-22,5

### WEIGHT AND DIMENSION

Gross Trailer Weight (G.T.W.)	23 t
Container handling cap.	4000/6000 mm
Max speed	40 km/h
(*) Tare	5100 kg

### ARTICULATED ARM

Hook level	1425/1460/1570
Container internal/external locking	hydraulic
Tipping angle	47°
Tipping capacity	18 t
Lifting capacity	18 t

### OLEO-DYNAMIC SYSTEM

Tractor hydraulics	2 controls d. a.
--------------------	------------------

(\*) Tare: the trailer weight is referred to the basic unit without options and accessories.

### FAHRGESTELL

Rahmenquerschnitt	250 x 100 mm
Achsenquerschnitt	2 x 110 mm
Bremstrommel	406 x 120 mm
Bereifung	550/60-22,5

### MASSE UND GEWICHT

Gesamtgewicht	23 t
Containerlänge min./max	4000/6000 mm
Zul.Höchstgeschwindigkeit	40 km/h
(*) Leergewicht	5100 kg

### KNICKARM

Hakenhöhe	1425/1460/1570
Innere/äußere Containerverriegelung	hydraulisch
Kippwinkel	47°
kippkapazität	18 t
Hebekapazität	18 t

### HIDRAULIKANLAGE

Hydraulik am Traktor	2 doppelwirkende Steuerelemente
----------------------	---------------------------------

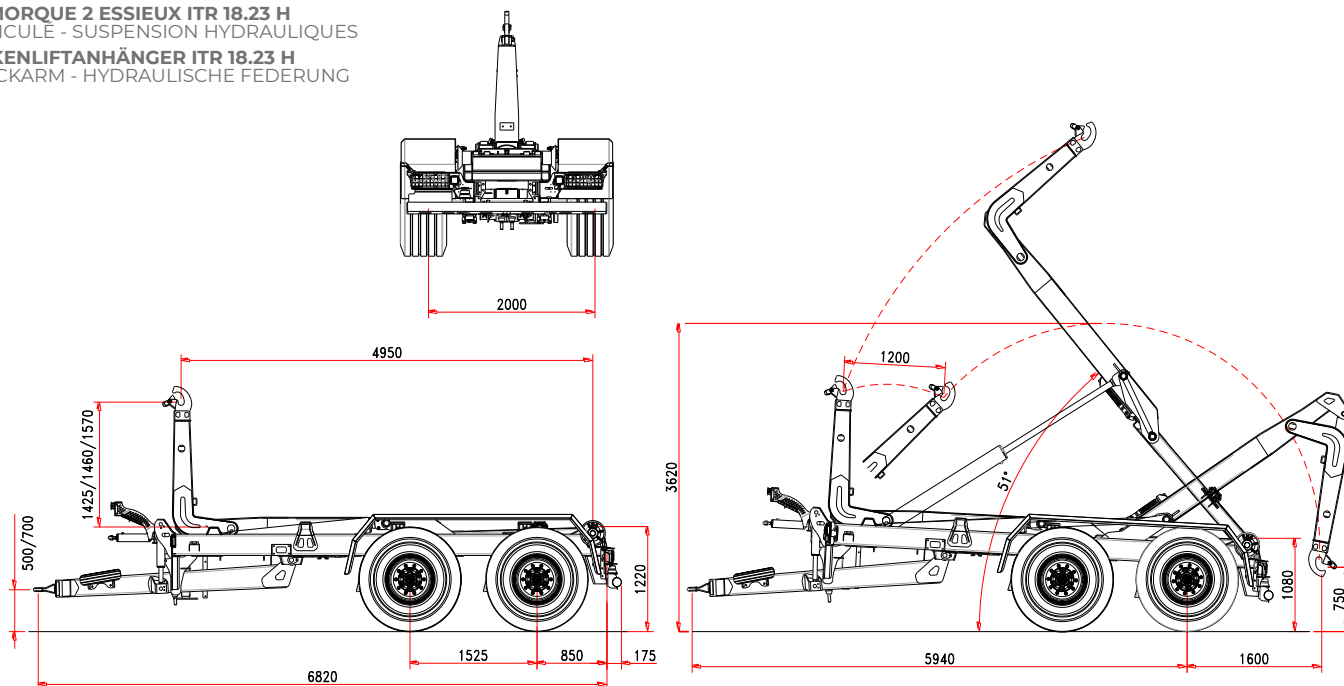
(\*) Leergewicht ohne Zusatzausstattungen und Sonderausrüstungen



**RIMORCHIO 2 ASSI ITR 18.23 H**  
ARTICOLATO - SOSPENSIONI IDRAULICHE  
**2 AXLES HOOKLIFT TRAILER ITR 18.23 H**  
ARTICULATED - HYDRAULIC SUSPENSIONS

**REMORQUE 2 ESSIEUX ITR 18.23 H**  
ARTICULÉ - SUSPENSION HYDRAULIQUES

**HAKENLIFTAHÄNGER ITR 18.23 H**  
KNICKARM - HYDRAULISCHE FEDERUNG




## Caratteristiche Standard

## Standard Features

## Caractéristiques Standard

## Standard-Merkmale

### TELAIO

	Sezione longheroni	250 x 100 mm
	Sezioni assali	2 x 150 mm
	Freni a tamburo	406 x 120 mm
	Sezione ruote	550/60-22,5

### PESO E MISURE

P.T.T. (G.T.W.)	23 t
Dimensione Min./Max cassone	4000/6000 mm
Max velocità	40 km/h
(*) Tara	5200 kg

### BRACCIO ARTICOLATO


Altezza gancio	1425/1460/1570
Bloccaggio container esterno	idraulico
Angolo di ribaltamento	51°
Max cap. ribaltamento	18 t
Max cap. carico	18 t

### SISTEMA IDRAULICO

Idraulica al trattore	4 elementi d.e.
-----------------------	-----------------

(\*) la tara è riferita all'attrezzatura base del rimorchio senza opzioni ed accessori

### CHASSIS

	Section structure	250 x 100 mm
	Section essieux	2 x 150 mm
	Freins tambour	406 x 120 mm
	Pneus	550/60-22,5

### POIDS ET DIMENSIONS

Poids totale remorque	23 t
Longueur conteneur	4000/6000 mm
Max vitesse	40 km/h
(*) Tara	5200 kg

### BRAS ARTICULE


Hauteur crochet	1425/1460/1570
Verrouillage conteneur	hydraulique
Angle de bennage	51°
Max capacité de bennage	18 t
Max capacité de charge	18 t

### SYSTÈME HYDRAULIQUE

Hydraulique tracteur	4 contrôles d.e.
----------------------	------------------

(\*) La tare de la remorque est référencé à l'équipement base sans options et accessoires.

### CHASSIS

	Frame section	250 x 100 mm
	Axles section	2 x 150 mm
	Brake drums	406 x 120 mm
	Wheel size	550/60-22,5

### WEIGHT AND DIMENSION

Gross Trailer Weight (G.T.W.)	23 t
Container handling cap.	4000/6000 mm
Max speed	40 km/h
(*) Tare	5200 kg

### ARTICULATED ARM


Hook level	1425/1460/1570
Container internal/external locking	hydraulic
Tipping angle	51°
Tipping capacity	18 t
Lifting capacity	18 t

### OLEO-DYNAMIC SYSTEM

Tractor hydraulics	4 controls d. a.
--------------------	------------------

(\*) Tare: the trailer weight is referred to the basic unit without options and accessories.

### FAHRGESTELL

	Rahmenquerschnitt	250 x 100 mm
	Achsenquerschnitt	2 x 150 mm
	Bremstrommel	406 x 120 mm
	Bereifung	550/60-22,5

### MASSE UND GEWICHT

Gesamtgewicht	23 t
Containerlänge min./max	4000/6000 mm
Zul.Höchstgeschwindigkeit	40 km/h
(*) Leergewicht	5200 kg

### KNICKARM

Hakenhöhe	1425/1460/1570
Innere/äußere Containerverriegelung	hydraulisch
Kippwinkel	51°
kippkapazität	18 t
Hebekapazität	18 t

### HIDRAULIKANLAGE

Hydraulik am Traktor	4 doppelwirkende
----------------------	------------------

(\*) Leergewicht ohne Zusatzausstattungen und Sonderausrüstungen

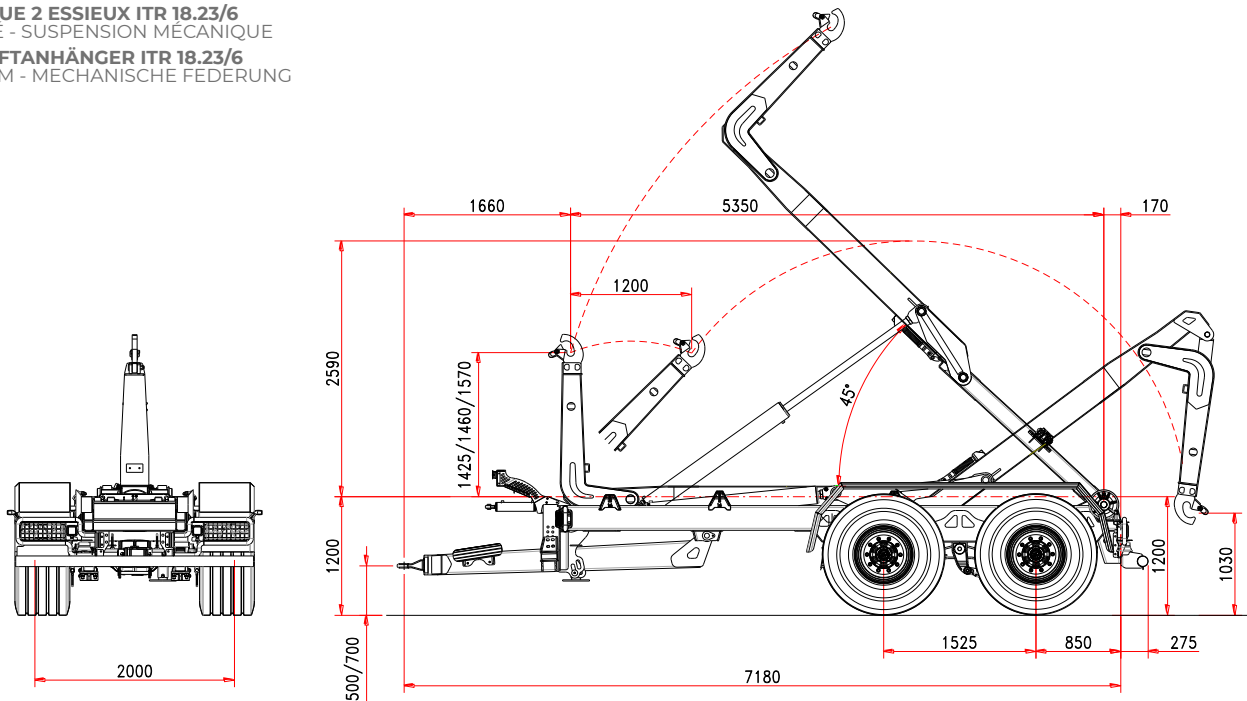


**RIMORCHIO 2 ASSI ITR 18.23/6**  
ARTICOLATO - SOSPENSIONI MECCANICHE

**2 AXLES HOOKLIFT TRAILER ITR 18.23/6**  
ARTICULATED - MECHANIC SUSPENSIONS

**REMORQUE 2 ESSIEUX ITR 18.23/6**  
ARTICULÉ - SUSPENSION MÉCANIQUE

**HAKENLIFTANHÄNGER ITR 18.23/6**  
KNICKARM - MECHANISCHE FEDERUNG



## Caratteristiche Standard

## Standard Features

## Caractéristiques Standard

## Standard-Merkmale

### TELAIO

Sezione longheroni	250 x 100 mm
Sezioni assali	2 x 110 mm
Freni a tamburo	406 x 120 mm
Sezione ruote	550/60-22,5

### PESO E MISURE

P.T.T. (G.T.W.)	23 t
Dimensione Min./Max cassone	4500/6200 mm
Max velocità	40 km/h
(*) Tara	5300 kg

### BRACCIO ARTICOLATO

Altezza gancio	1425/1460/1570
Bloccaggio container esterno	idraulico
Angolo di ribaltamento	47°
Max cap. ribaltamento	18 t
Max cap. carico	18 t

### SISTEMA IDRAULICO

Idraulica al trattore	2 elementi d.e.
-----------------------	-----------------

(\*) la tara è riferita all'attrezzatura base del rimorchio senza opzioni ed accessori

### CHASSIS

Section structure	250 x 100 mm
Section essieux	2 x 110 mm
Freins tambour	406 x 120 mm
Pneus	550/60-22,5

### POIDS ET DIMENSIONS

Poids totale remorque	23 t
Longueur conteneur	4500/6200 mm
Max vitesse	40 km/h
(*) Tara	5300 kg

### BRAS ARTICULE

Hauteur crochet	1425/1460/1570
Verrouillage conteneur	hydraulique
Angle de bennage	47°
Max capacité de bennage	18 t
Max capacité de charge	18 t

### SYSTÈME HYDRAULIQUE

Hydraulique tracteur	2 contrôles d.e.
----------------------	------------------

(\*) La tare de la remorque est référencé à l'équipement base sans options et accessoires.

### CHASSIS

Frame section	250 x 100 mm
Axles section	2 x 150 mm
Brake drums	406 x 120 mm
Wheel size	550/60-22,5

### WEIGHT AND DIMENSION

Gross Trailer Weight (G.T.W.)	23 t
Container handling cap.	4000/6000 mm
Max speed	40 km/h
(*) Tare	5200 kg

### ARTICULATED ARM

Hook level	1425/1460/1570
Container internal/external locking	hydraulic
Tipping angle	47°
Tipping capacity	18 t
Lifting capacity	18 t

### OLEO-DYNAMIC SYSTEM

Tractor hydraulics	2 controls d. a.
--------------------	------------------

(\*) Tare: the trailer weight is referred to the basic unit without options and accessories.

### FAHRGESTELL

Rahmenquerschnitt	250 x 100 mm
Achsenquerschnitt	2 x 150 mm
Bremstrommel	406 x 120 mm
Bereifung	550/60-22,5

### MASSE UND GEWICHT

Gesamtgewicht	23 t
Containerlänge min./max	4000/6000 mm
Zul.Höchstgeschwindigkeit	40 km/h
(*) Leergewicht	5200 kg

### KNICKARM

Hakenhöhe	1425/1460/1570
Innere/äußere Containerverriegelung	hydraulisch
Kippwinkel	47°
kippkapazität	18 t
Hebekapazität	18 t

### HIDRAULIKANLAGE

Hydraulik am Traktor	2 doppelwirkende Steuerelemente
----------------------	---------------------------------

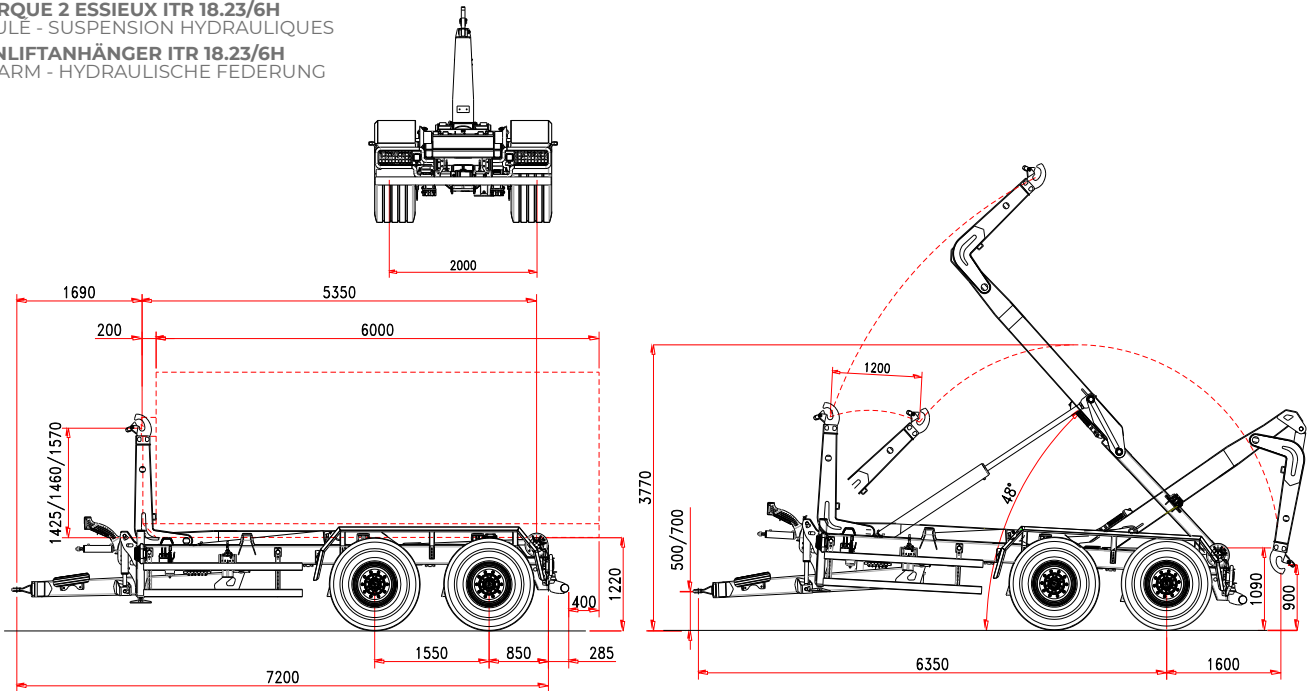
(\*) Leergewicht ohne Zusatzausstattungen und Sonderausrüstungen



**RIMORCHIO 2 ASSI ITR 18.23/6H**  
ARTICOLATO - SOSPENSIONI MECCANICHE  
**2 AXLES HOOKLIFT TRAILER ITR 18.23/6H**  
ARTICULATED - HYDRAULIC SUSPENSIONS

**REMORQUE 2 ESSIEUX ITR 18.23/6H**  
ARTICULÉ - SUSPENSION HYDRAULIQUES

**HAKENLIFTANHÄNGER ITR 18.23/6H**  
KNICKARM - HYDRAULISCHE FEDERUNG



## Caratteristiche Standard

## Standard Features

## Caractéristiques Standard

## Standard-Merkmale

### TELAIO

Sezione longheroni	250 x 100 mm
Sezioni assali	2 x 150 mm
Freni a tamburo	406 x 120 mm
Sezione ruote	550/60-22,5

### PESO E MISURE

P.T.T. (G.T.W.)	23 t
Dimensione Min./Max cassone	4500/6200 mm
Max velocità	40 km/h
(*) Tara	5400 kg

### BRACCIO ARTICOLATO

Altezza gancio	1425/1460/1570
Bloccaggio container esterno	idraulico
Angolo di ribaltamento	48°
Max cap. ribaltamento	18 t
Max cap. carico	18 t

### SISTEMA IDRAULICO

Idraulica al trattore	4 elementi d.e.
-----------------------	-----------------

(\*) la tara è riferita all'attrezzatura base del rimorchio senza opzioni ed accessori

### CHASSIS

Section structure	250 x 100 mm
Section essieux	2 x 150 mm
Freins tambour	406 x 120 mm
Pneus	550/60-22,5

### POIDS ET DIMENSIONS

Poids totale remorque	23 t
Longueur conteneur	4500/6200 mm
Max vitesse	40 km/h
(*) Tara	5400 kg

### BRAS ARTICULE

Hauteur crochet	1425/1460/1570
Verrouillage conteneur	hydraulique
Angle de bennage	48°
Max capacité de bennage	18 t
Max capacité de charge	18 t

### SYSTÈME HYDRAULIQUE

Hydraulique tracteur	4 contrôles d.e.
----------------------	------------------

(\*) La tare de la remorque est référée à l'équipement base sans options et accessoires.

### CHASSIS

Frame section	250 x 100 mm
Axles section	2 x 150 mm
Brake drums	406 x 120 mm
Wheel size	550/60-22,5

### WEIGHT AND DIMENSION

Gross Trailer Weight (G.T.W.)	23 t
Container handling cap.	4500/6200 mm
Max speed	40 km/h
(*) Tare	5400 kg

### ARTICULATED ARM

Hook level	1425/1460/1570
Container internal/external locking	hydraulic
Tipping angle	48°
Tipping capacity	18 t
Lifting capacity	18 t

### OLEO-DYNAMIC SYSTEM

Tractor hydraulics	4 controls d. a.
--------------------	------------------

(\*) Tare: the trailer weight is referred to the basic unit without options and accessories.

### FAHRGESTELL

Rahmenquerschnitt	250 x 100 mm
Achsenquerschnitt	2 x 150 mm
Bremstrommel	406 x 120 mm
Bereifung	550/60-22,5

### MASSE UND GEWICHT

Gesamtgewicht	23 t
Containerlänge min./max	4500/6200 mm
Zul.Höchstgeschwindigkeit	40 km/h
(*) Leergewicht	5400 kg

### KNICKARM

Hakenhöhe	1425/1460/1570
Innere/äußere Containerverriegelung	hydraulisch
Kippwinkel	48°
kippkapazität	18 t
Hebekapazität	18 t

### HIDRAULIKANLAGE

Hydraulik am Traktor	4 doppelwirkende Steuerelemente
----------------------	---------------------------------

(\*) Leergewicht ohne Zusatzausstattungen und Sonderausrüstungen





[www.itrunner.it](http://www.itrunner.it)

**ITRunner**



**ITRunner**

Reg. Oltre Rea, 32  
12060 Monchiero (CN) - Italy  
Phone +39 0173 780 002  
Email: [info@itrunner.it](mailto:info@itrunner.it)

